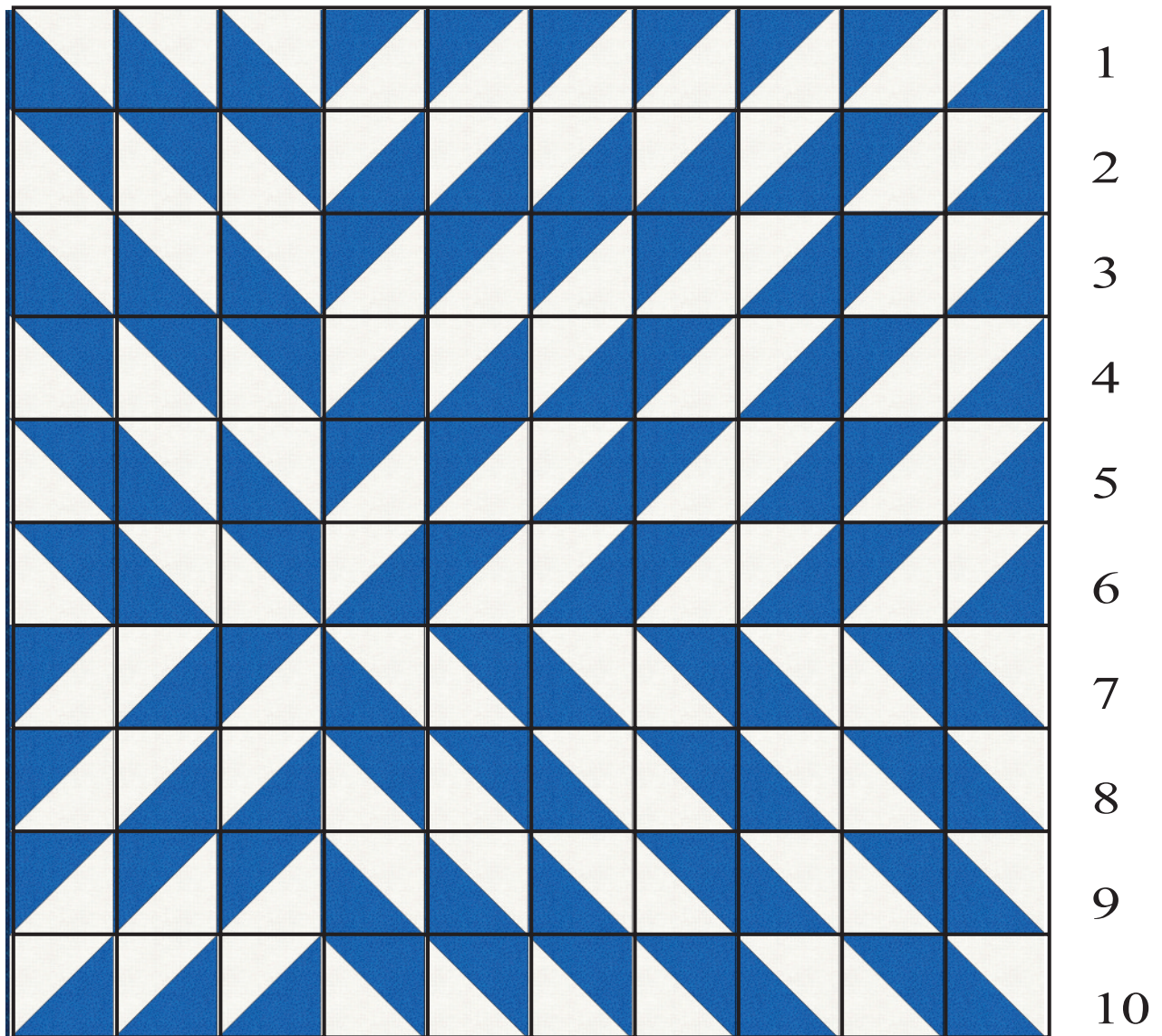


# April Challenge BOTM 2020



[www.emeraldvalleyquilters.org](http://www.emeraldvalleyquilters.org)



**Use 100% cotton fabric with 1/4" seam allowance.**

This month we're going to do something different. Rather than just the block we are giving you the quilt pattern. As you can see it's just one half square triangle. It's the way the block is placed that gives you this design. We think that it would be striking in different shades of blue!

## For the Quilt

We have numbered the sides so you can keep better track of the row you are on when laying out your blocks. It might be helpful to lay a piece of paper down covering up the rows below the one you are working on, this will help you to focus.

**Each block is 8-1/2" unfinished**



**This will make you two 8-1/2" HST blocks**

**Use solid white & print of blue.**

## Cutting

From White cut one 8-7/8" square

From Blue cut one 8-7/8" square

## Construction

Draw a line diagonally on the white fabric. Place it on the blue fabric right sides facing in. Stitch 1/4" down both sides of the drawn line. Cut on the drawn line open and press.

